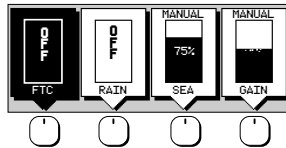


### GAIN

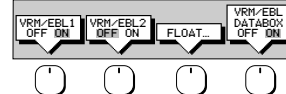
- Controls the presentation of radar targets.
- GAIN controls background noise (speckle).
- SEA controls sea clutter.
- RAIN controls rain clutter around the vessel.
- FTC controls rain clutter at a distance.
- Press for soft keys display.



Select a slider using the soft key or trackpad.  
Toggle between Auto/Man or off/on by pressing soft key again.  
Adjust slider using trackpad, and press **ENTER** to finish.

### VRM/EBL

- Used to measure range and bearing to/between targets.
- Press to place VRM/EBL if one not already placed.
- Adjust position using trackpad, and press **ENTER** to finish.
- Press to display soft keys if VRM/EBL already placed.



Use soft key to toggle VRM/EBL on or off.  
Press FLOAT to access float options for existing VRM/EBL.  
Press VRM/EBL DATABOX to toggle data box display off/on.

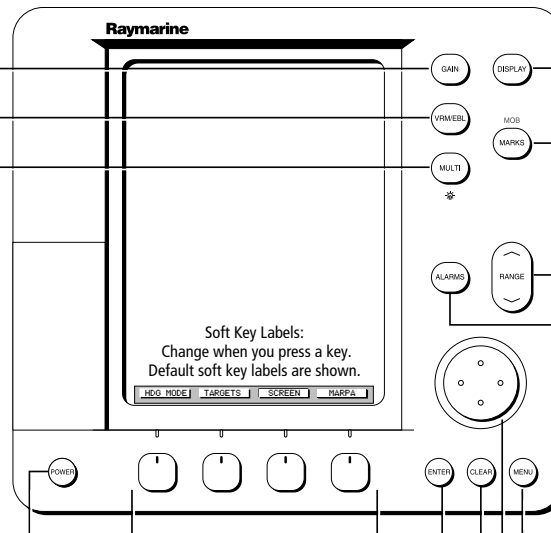
### MULTI

- Controls guard zone alarm sensitivity, and tuning the receiver.
- Also controls display lighting and brightness.
- Press to display sliders.

**Press and hold MULTI key to set brightness to 100%.**



Select a slider using the soft key or trackpad.  
Toggle between Auto/Man or off/on by pressing key again.  
Adjust slider using trackpad, and press **ENTER** to finish.



Soft Key Labels:  
Change when you press a key.  
Default soft key labels are shown.

**Soft keys**  
Press to select option, or highlight option or slider.  
Labels change when you press soft/dedicated key.  
Elipses (...) after the text indicate that pressing soft key leads to a further display of soft key options.

**ENTER**  
Confirms selection and (if appropriate) clears current soft key labels. It performs the selected task, accepts changes, or leads to display of more options.  
When cursor text is displayed, takes cursor control of the object.  
When arrow-head cursor symbol is displayed, drops the object under cursor control.

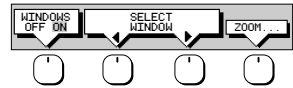
**CLEAR**  
Cancels operation in progress and returns to the previous display.  
Deletes an object/function under cursor control.

**Trackpad**  
Controls cursor position on the screen, and also the sliders and setup options.  
Hold the trackpad down to move the cursor faster.

**POWER**  
Press and hold until unit beeps to turn on display.  
Press to toggle between Standby and Transmit.  
Press for 3 seconds to turn off display.

### DISPLAY

- Controls display mode and windows.
- Press for display mode and soft keys display.
- Press again to toggle through display modes, and **ENTER**
- Press and hold for 2 seconds for full screen display of the upper window.



Press soft key to toggle window on/off, or return to full screen.  
Zoom: Press ZOOM key to display zoom window option.  
Move Zoom box using trackpad, press **ENTER** to finish.

### MARKS / MOB

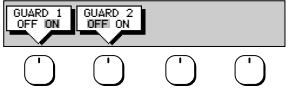
- Controls placing marks, and Man Overboard function.
- Press to place mark at cursor position, and use trackpad to move mark. Press **ENTER** to finish.
- Press and hold for 2 seconds to activate or cancel MOB.

### RANGE

- Controls range scale. Range scale and range rings are shown in the Status Bar.
- Press top of key to increase the range scale.
- Press bottom of key to decrease the range scale.
- Press and hold to change the scale faster.

### ALARMS

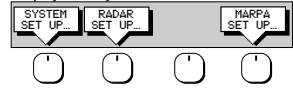
- Used to control guard zones.
- Press to place guard zone if one not already placed.
- Adjust size/shape using trackpad, press **ENTER** to finish.
- Press to display soft keys if guard zone already placed.



Use soft key to toggle zone on or off.  
Adjust size/shape using trackpad, and press **ENTER** to finish.

### MENU

- Provides access to setup options.
- Press to display soft keys.

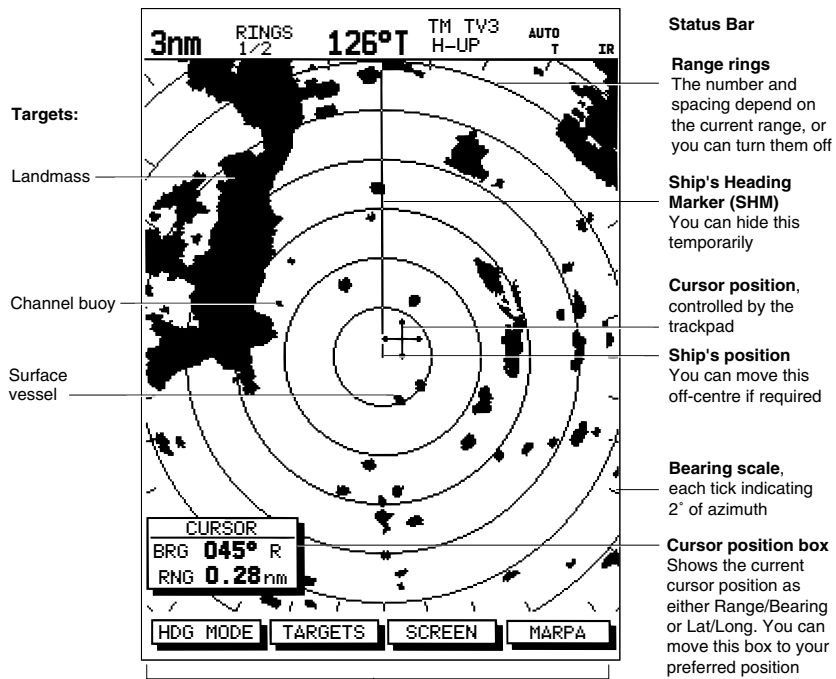


Press soft key to display required setup menu, then use trackpad to select option and soft key to change setting.  
Press **ENTER** to close menu, and **CLEAR** to finish.

D5665\_1

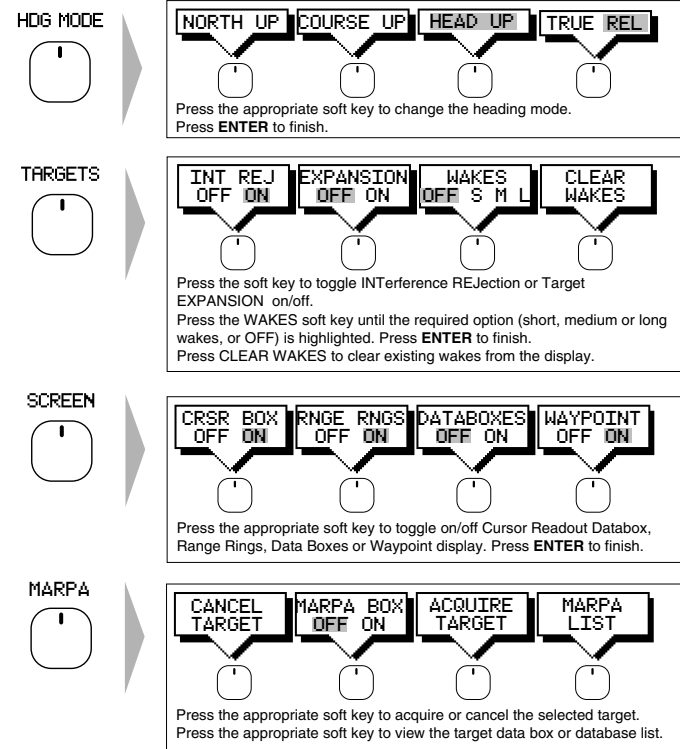
# Quick Reference Card: hsb<sup>2</sup> PLUS Series Color LCD Radar Displays

## Default Display



These can be turned off; press any soft key to re-display them. Different labels are displayed when you press a key.

## Default Soft Keys

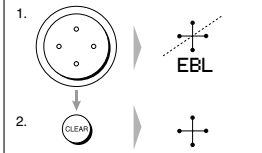


## Context Sensitive Cursor Control

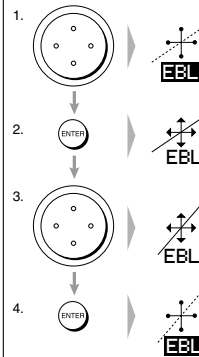
When the cursor is positioned over special features on the display, a text label appears to identify the feature. Depending on the feature, you can then move, re-size or delete it.

Text Label	Feature
BOX	Data box (any type)
CTR	Radar centre
EBL	Electronic Bearing Line
FLT	Floating VRM/EBL
GRD	Guard zone corner or side
MOB	Man OverBoard Marker
MRK	Mark
SHM	Ship's Heading Marker
VRM	Variable Range Marker
VRM/EBL	VRM and EBL
ZMB	Zoom box

### Delete (for example, an EBL)



### Move (for example, an EBL)



## Status Bar

